



SDK Introduction

March 4 2014

Introduction: Geotab SDK

An SDK is a “software development kit” which helps people use a platform to extend functionality

- + Apps
- + Integrate third-party software
- + Geotab addins
- + Automate tasks

Introduction: Geotab SDK

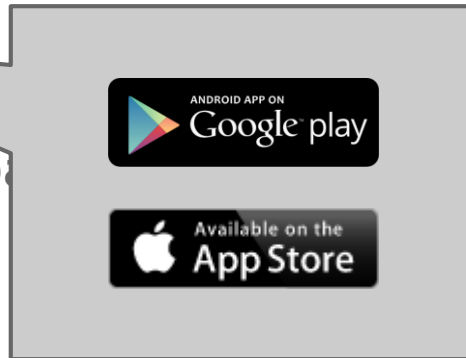
An SDK is a “software development kit” which helps people use a platform to extend functionality

+ Apps

+ Integrate third-p

+ Geotab addins

+ Automate tasks



Introduction: Geotab SDK

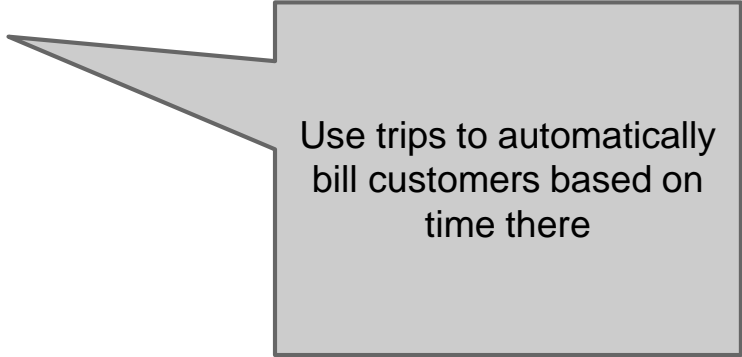
An SDK is a “software development kit” which helps people use a platform to extend functionality

+ Apps

+ Integrate third-party software

+ Geotab addins

+ Automate tasks



Use trips to automatically bill customers based on time there

Introduction: Geotab SDK

An SDK is a “software development kit” which helps people use a platform to extend functionality

+ Apps

+ Integrate third-party software

+ Geotab addins

+ Automate tasks



Create new functionality
inside MyGeotab

Introduction: Geotab SDK

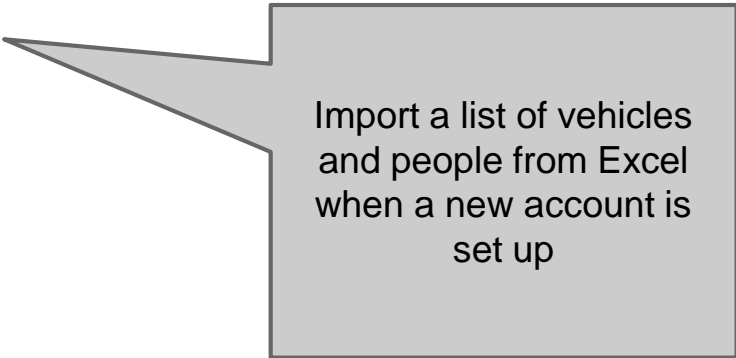
An SDK is a “software development kit” which helps people use a platform to extend functionality

+ Apps

+ Integrate third-party software

+ Geotab addins

+ Automate tasks



Import a list of vehicles
and people from Excel
when a new account is
set up

Introduction: Who can use it

There are technical and non-technical aspects of the Geotab SDK for anyone using 5.7 or later

- + *Customers* can import and export Geotab data
- + *Resellers* can set up and manage accounts more effectively
- + *Developers* can create custom software using Geotab data

Introduction: Where to get it

<http://sdk.geotab.com>

Support: Help when you need it

Geotab offers developer level support for all aspects of the SDK

- + Ask questions in the SDK forums
- + Get up to date documentation and how-to's
- + Download sample apps to kick start development

Ecosystem: It's alive...

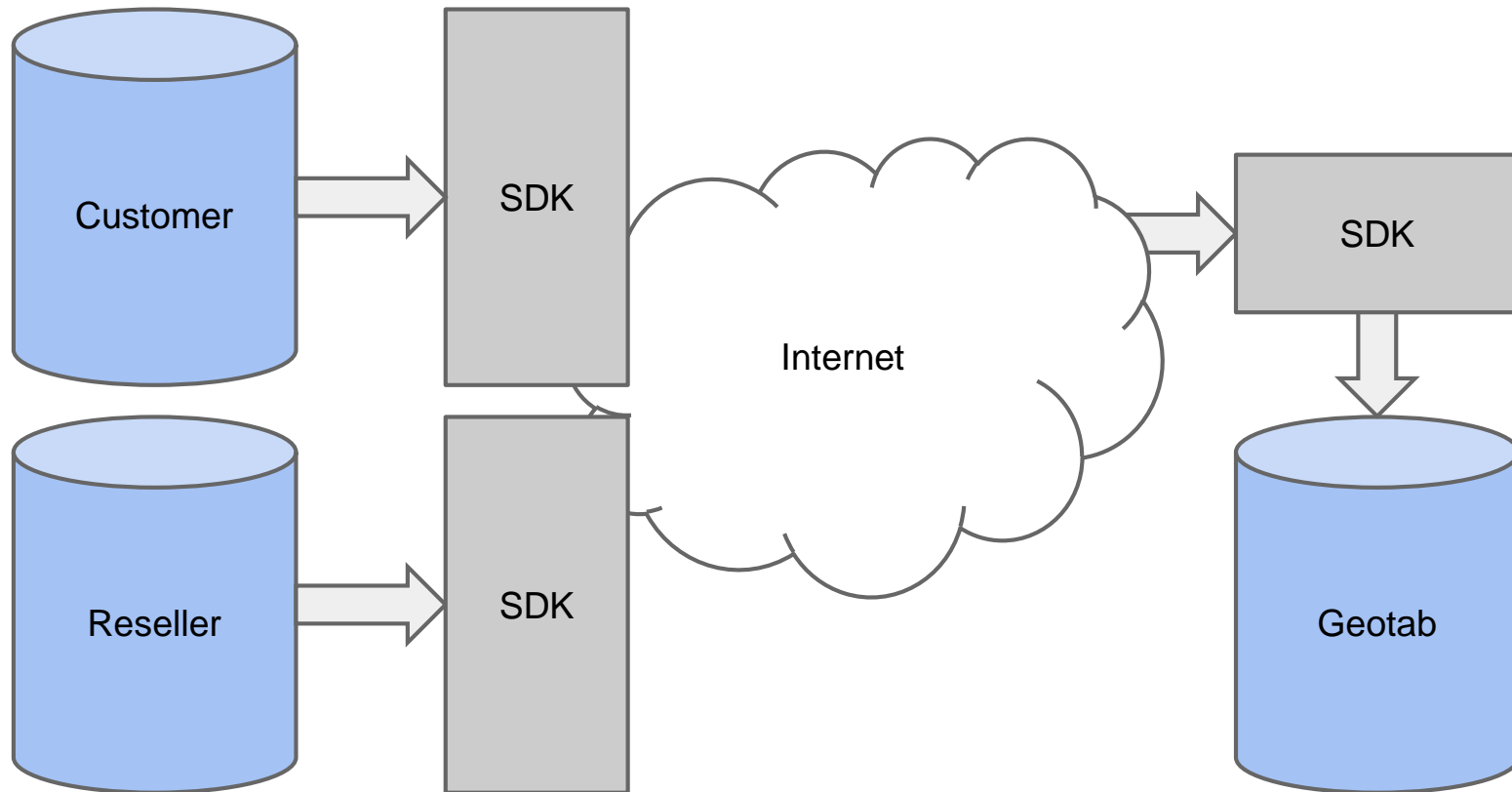
Writing code isn't everyone's strong suit

- + Third-party developers are on the forums too
- + Geotab may in the future open up an app store
- + Most competitors operate in a closed system with no API



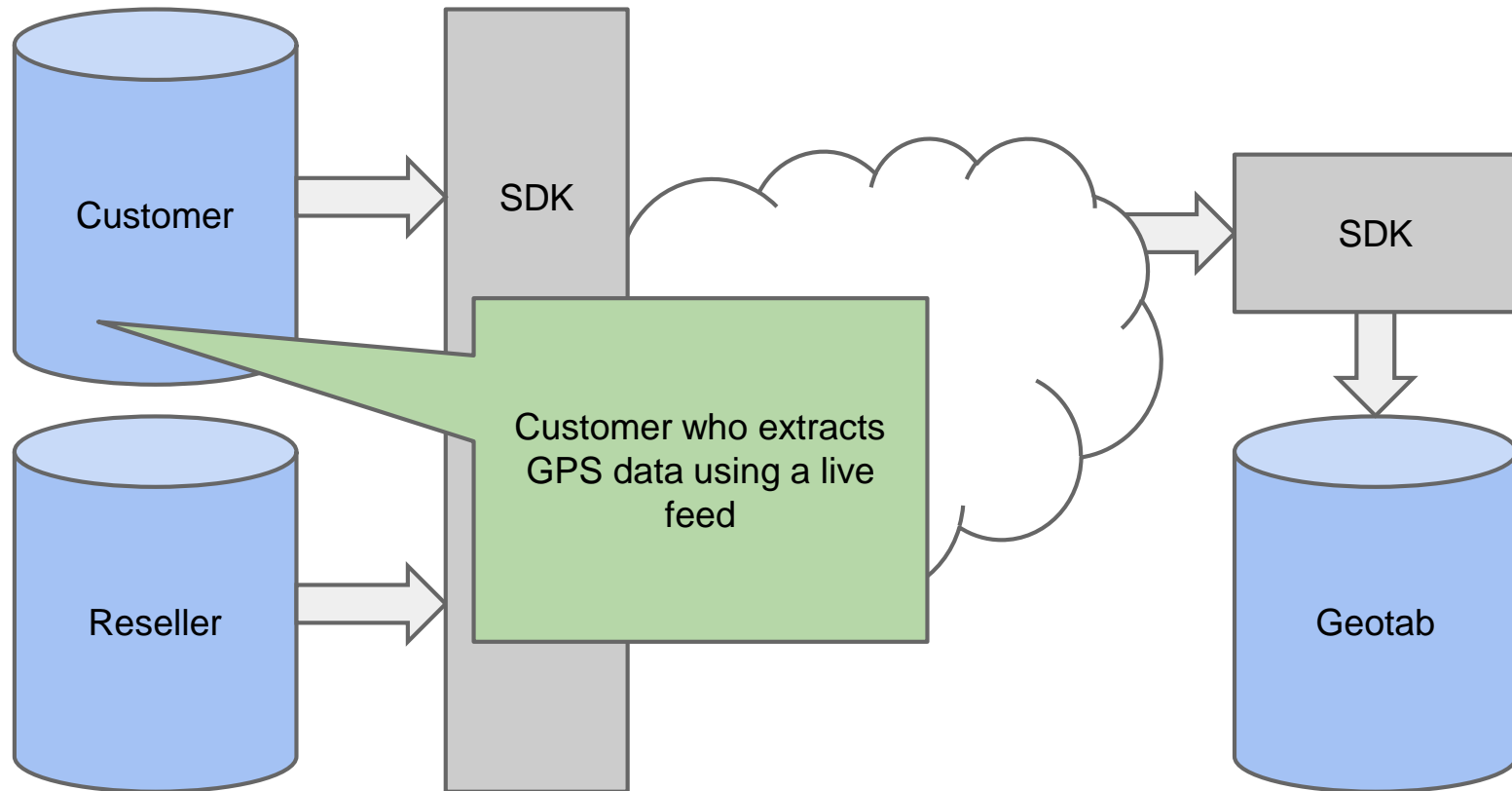
SDK Concepts: What can be made

The entire MyGeotab web application is built using the SDK



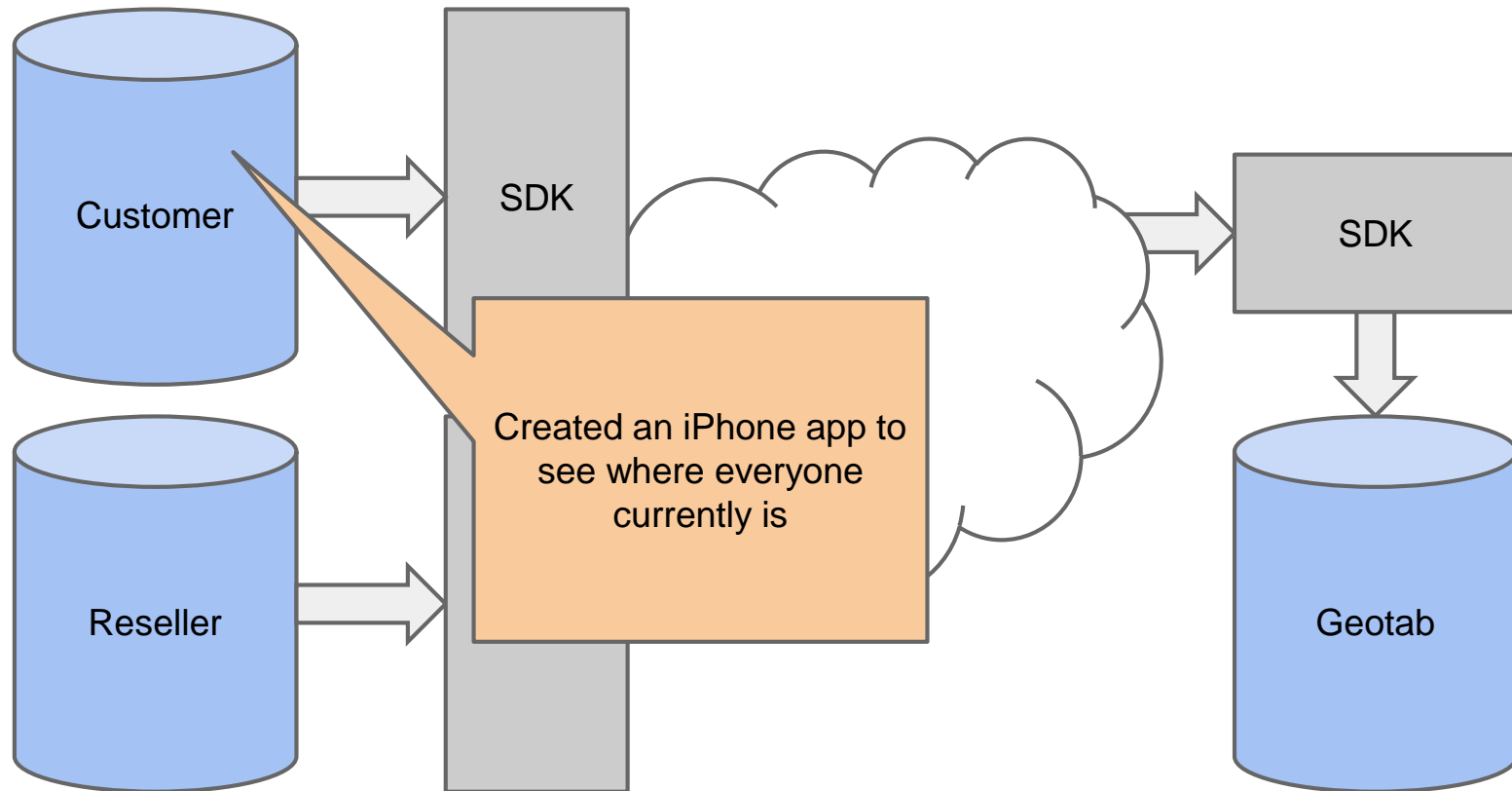
SDK Concepts: What can be made

The entire MyGeotab web application is built using the SDK



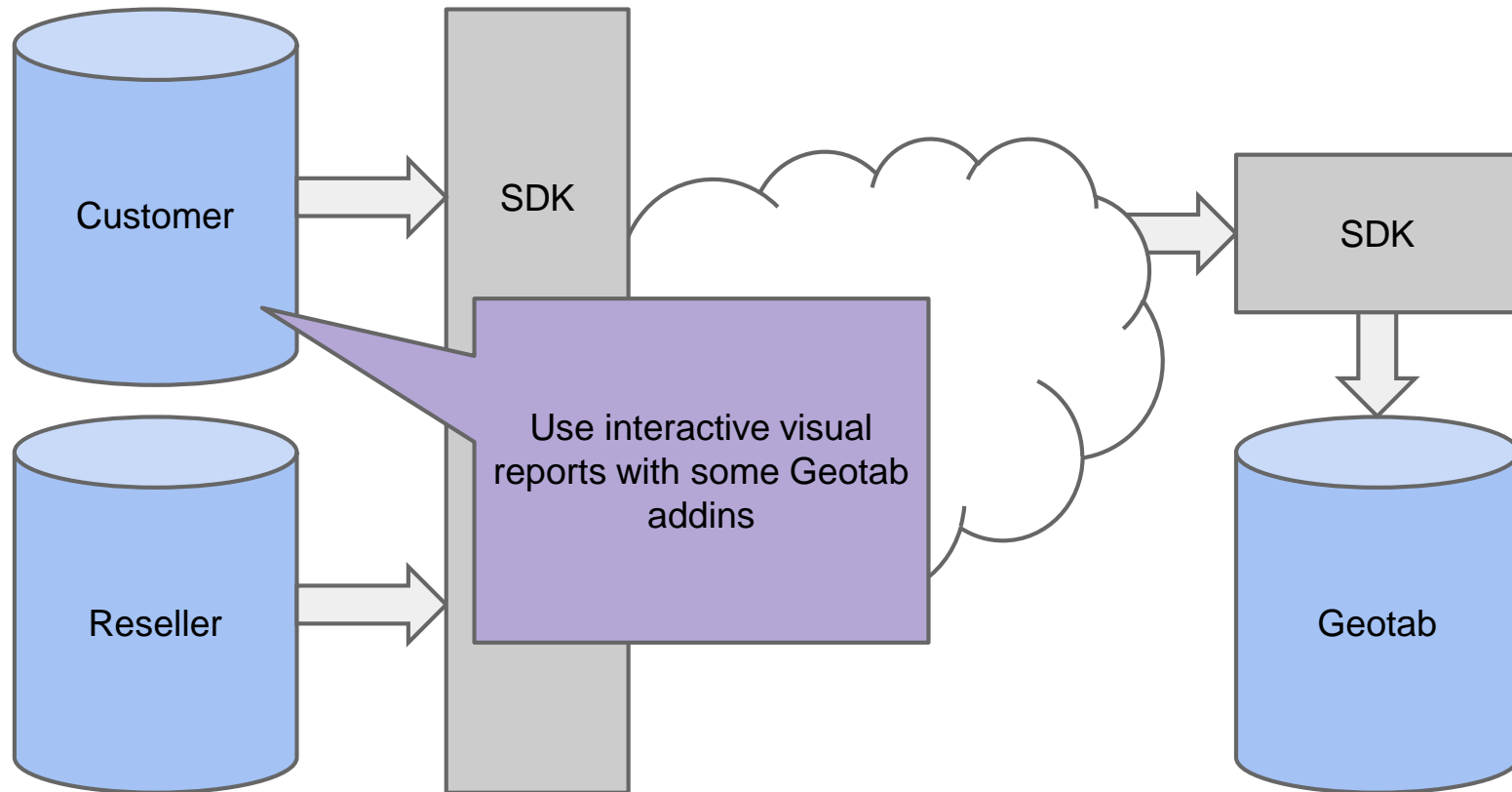
SDK Concepts: What can be made

The entire MyGeotab web application is built using the SDK



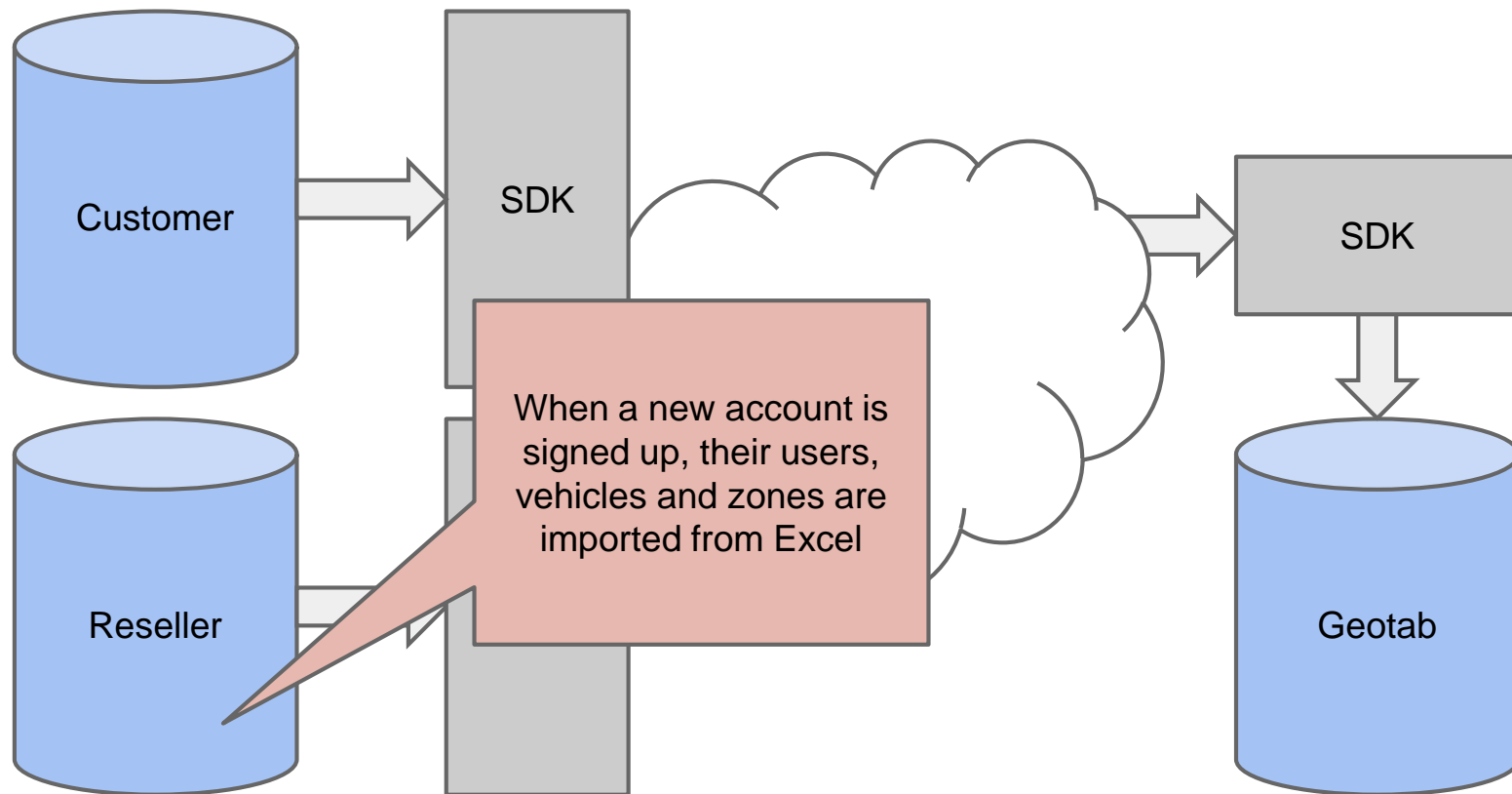
SDK Concepts: What can be made

The entire MyGeotab web application is built using the SDK



SDK Concepts: What can be made

The entire MyGeotab web application is built using the SDK



SDK Concepts: Language support

Geotab offers 3 main ways to create custom apps

+ Web applications which use the JavaScript SDK

+ Desktop applications which use the C# SDK

+ Other programming languages using HTTP

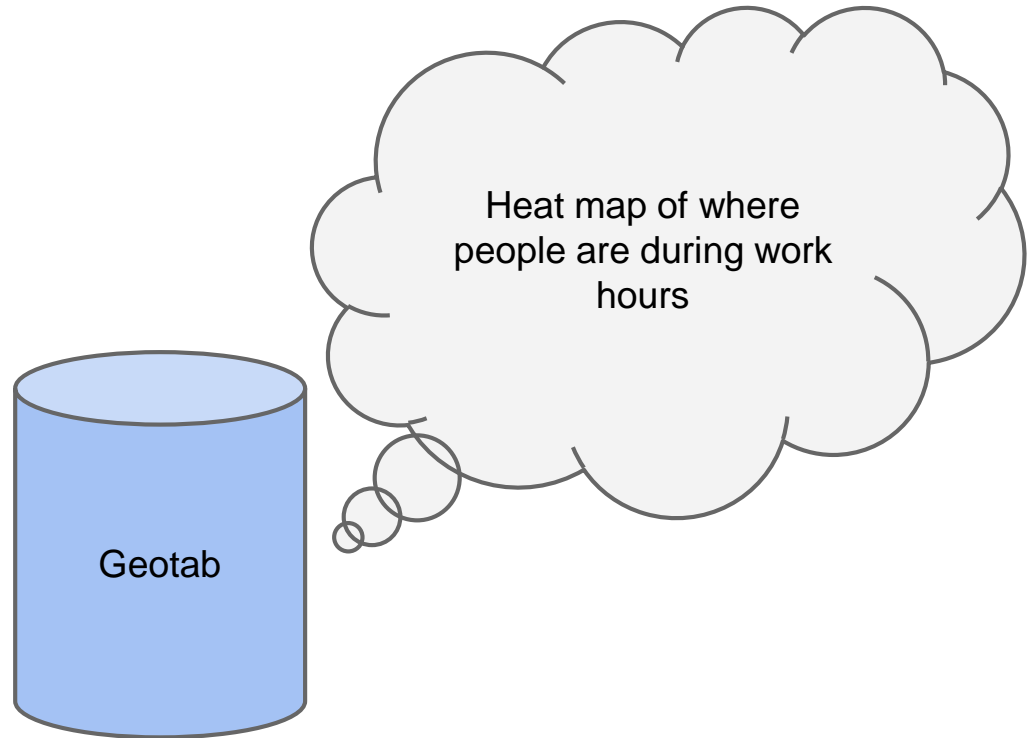


Addins: Overview

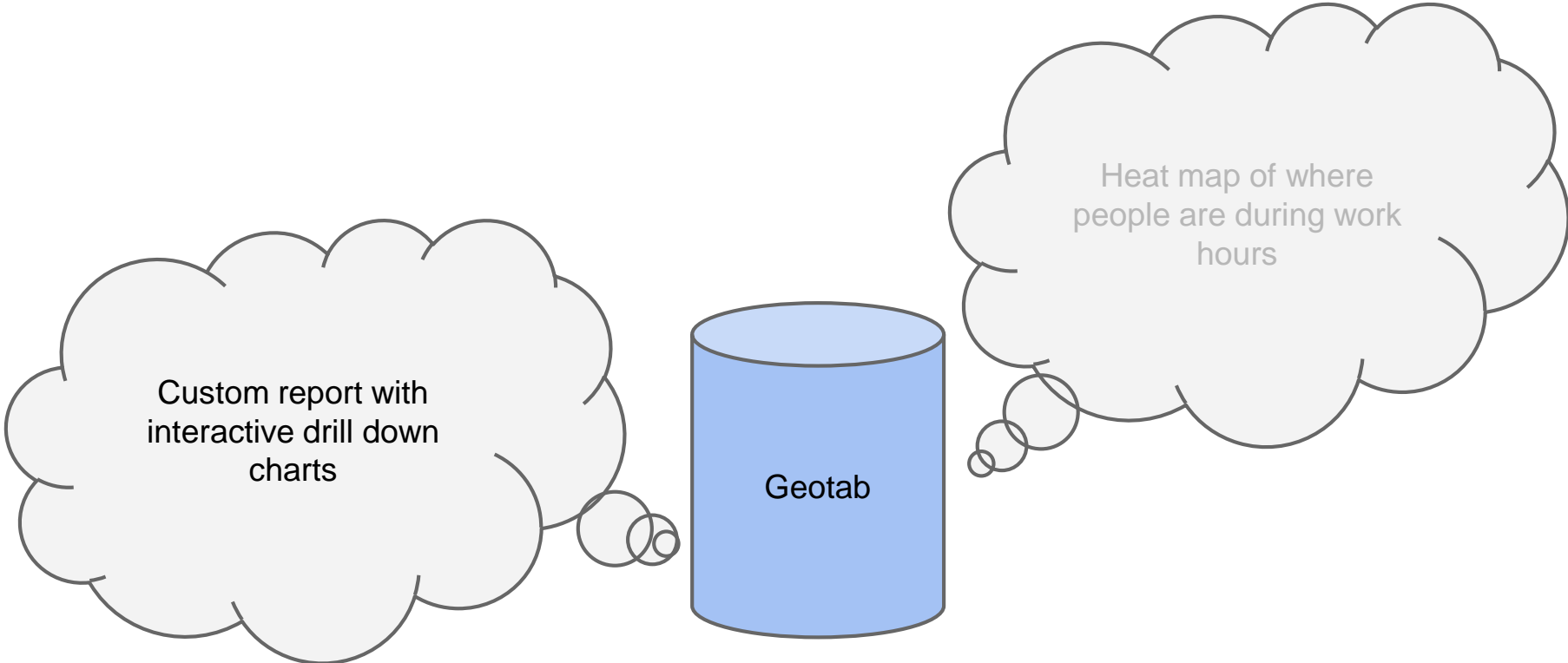
Addins are mini web applications that live inside Geotab

- + Adds specific functionality to certain customers
- + Can be reports, visualizations, maps, etc
- + Greatly reduces the amount of development time

Addins: Ideas



Addins: Ideas

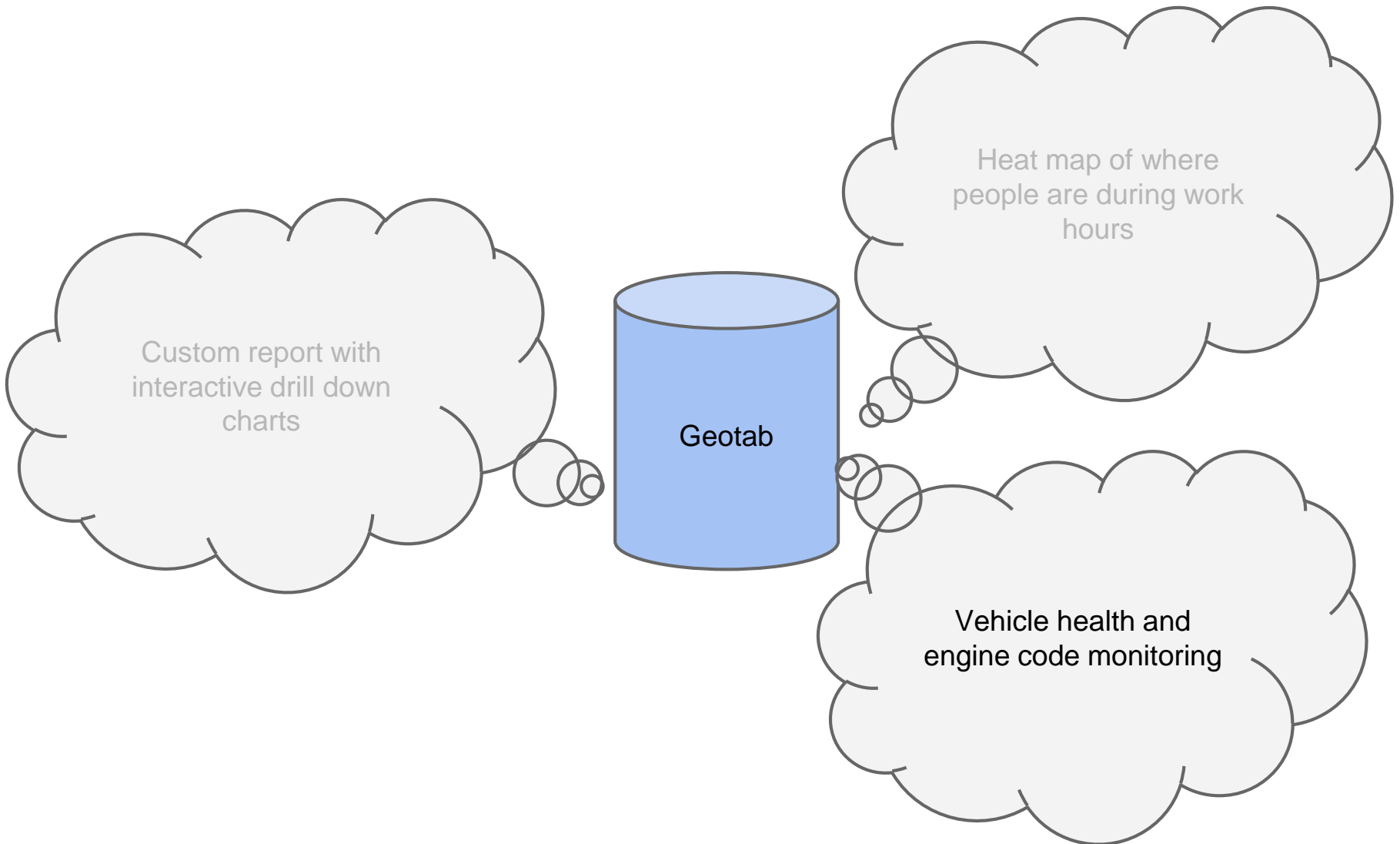


Custom report with
interactive drill down
charts

Geotab

Heat map of where
people are during work
hours

Addins: Ideas



Addins: Ideas

Custom report with
interactive drill down
charts

Overlay real time traffic
cameras to see when you
should head home

Geotab

Heat map of where
people are during work
hours

Vehicle health and
engine code monitoring

Addins: Ideas

Accident recreation with
lead-up causes

Custom report with
interactive drill down
charts

Overlay real time traffic
cameras to see when you
should head home

Geotab

Heat map of where
people are during work
hours

Vehicle health and
engine code monitoring

Addins: Ideas

Display tweet location of where Police have speed traps

Accident recreation with lead-up causes

Heat map of where people are during work hours

Custom report with interactive drill down charts

Geotab

Overlay real time traffic cameras to see when you should head home

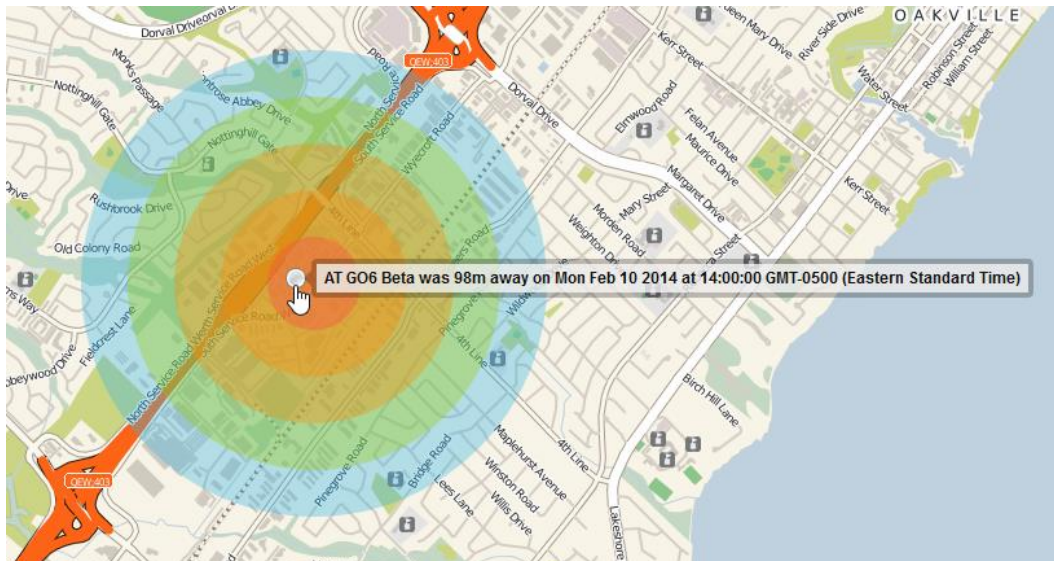
Vehicle health and engine code monitoring

Addins: Proximity overview

Visualizes whether a vehicle was ever at a location

+ “Your company van hit my vehicle yesterday...”

+ “You never picked up my garbage...”

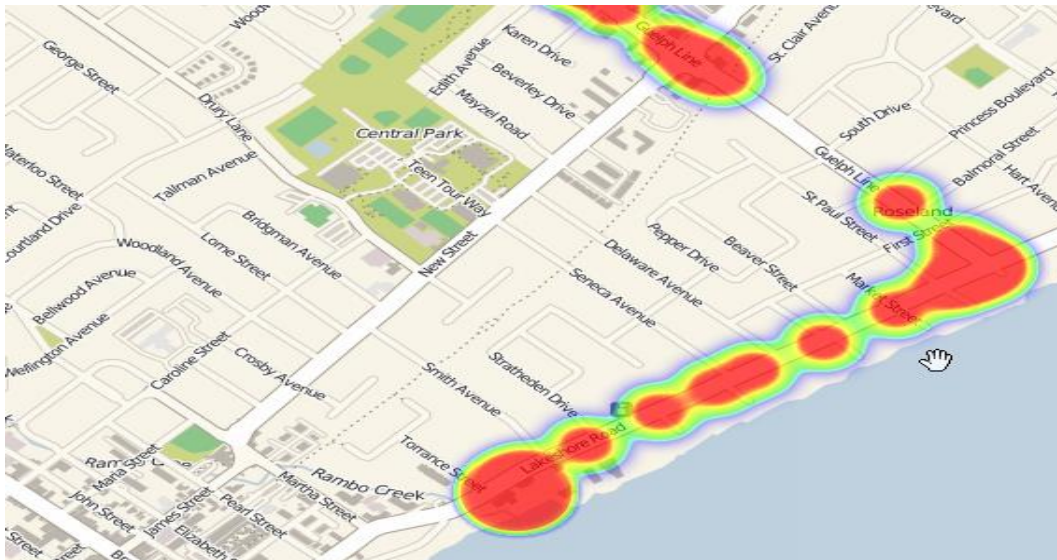


Addins: Heat map overview

Visualizes the location history of a vehicle

+ “How often does John go to Tim Hortons...”

+ “Where does John go when he leaves at 4 pm...”

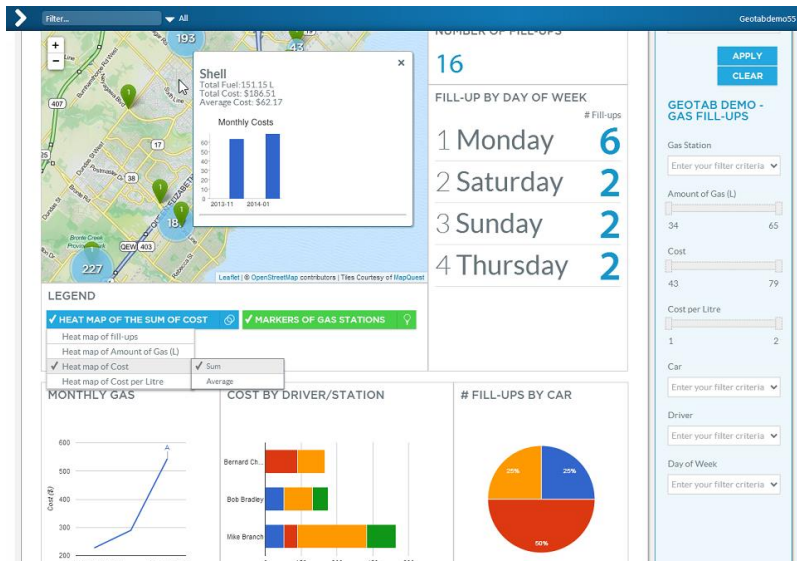


Addins: Third-party BI

Interactive dashboards by <http://www.mapsbi.com>

+ “Where is fuel being purchased throughout my fleet?”

+ “Am I paying too much for fuel?”



Web apps: Importing made easy

The SDK has pre-built web apps for importing lists of devices, users, zones, groups and routes

+ Create your list in Excel then just copy and paste

Geotab SDK: Takeaway

Every customer is different and the SDK opens the door to creating custom telematics solutions

- + The SDK is a differentiator versus most competitors
- + Addins are a very powerful new feature with low learning curve
- + Using the SDK creates lasting business relationships through interconnected systems and vendors